

# Directions for Enterprise 2026

23–25 September | Copenhagen, Denmark

---

## Sponsor Brochure

# Share the future

directions copenhagen  
for enterprise 2026

Directions for Enterprise is the new global community for the Microsoft Dynamics 365 F&SCM partner ecosystem. It brings together Microsoft, System Integrators, ISVs, MVPs, and CSPs to foster collaboration and open dialogue, advancing enterprise ERP and agentic AI solutions through shared expertise, honest conversations, and meaningful partnerships.

With deep experience in delivering high-impact partner conferences globally, our ambition is simple: to enable smarter decisions, accelerate innovation, and drive stronger growth across the Microsoft Business Applications ecosystem.

Directions for Enterprise creates a community where strategic insight meets real-world expertise.

## Key ambitions for Directions for Enterprise 2026

- Provide **strategic clarity** on the Dynamics 365 F&SCM roadmap directly from Microsoft
- Bring together **enterprise decision makers and experts** across the global partner ecosystem
- **Provide opportunities for ISVs** to showcase and promote their solutions
- Share **best practices, proven methodologies, and real customer experiences**
- **Strengthen collaboration** between SIs, ISVs, CSPs, and Microsoft to drive enterprise success

# Why sponsor?

directions copenhagen  
for enterprise 2026

Sponsoring Directions for Enterprise 2026 gives you a unique opportunity to position your organization and solutions at the center of the global Dynamics 365 F&SCM ecosystem. Engage directly with the partners and decision makers and influence the direction of enterprise ERP solutions through knowledge sharing, honest conversations, and strong collaboration.

As a sponsor, you will be able to:

- **Showcase your enterprise solutions** to a highly relevant audience of SIs, ISVs, CSPs, and Microsoft professionals
- **Meet key decision makers face-to-face**, including C-level executives, architects, and solution leaders
- **Build trust and long-term relationships** through meaningful, in-person engagement
- **Gain first-hand insight** into partner needs, enterprise challenges, and competitive offerings
- **Engage directly with consultants and developers**, receiving valuable feedback on your solutions
- **Strengthen and extend your global partner channel** within the Dynamics 365 F&SCM ecosystem

Directions for Enterprise is a **focused, high-value conference** where enterprise relevance, strategic dialogue, and delivery excellence take center stage. Sponsorship places your brand in a trusted environment where decisions are influenced and partnerships are formed



Directions for Enterprise 2026 sponsorship opportunities are based on availability, first-come, first-served, and may be sold out without notice.

[Purchase your sponsorship](#)

Please reach out to us with questions: [sponsor@directions4partners.com](mailto:sponsor@directions4partners.com)

# Gold sponsor

directions copenhagen  
for enterprise 2026

## 3 Gold sponsorship packages available

Gold 1: keynote presentation time at day 1

Gold 2: keynote presentation time at day 2

Gold 3: keynote presentation time at day 3

**Prime sponsorship to get your offering in front of all the attendees during the keynotes. Show your commitment to the eco-system. Establish yourself as an Industry Leader.**

## Sponsorship package includes:

- 10 minute presentation during keynote
- Booth – includes branded back wall, 2x roll up, 2x high table, 4x stool, TV
- 30 min. ISV session
- Attendee passes – 4 included
- Reserved table at the Community dinner – 10 people
- Promotion on conference website and community portal
- Promotion in conference mailing
- Promotion in conference app
- Thank you sponsors with logo during keynote (identifying all sponsors, grouped per level)
- 1 min. video with sound played before each keynote
- Purchase additional attendee passes at Super Early Bird price

Gold 1	25.000 EUR
Gold 2	25.000 EUR
Gold 3	22.000 EUR



# Silver sponsor

directions copenhagen  
for enterprise 2026

## 11 Silver sponsorship packages available

**Connect with new and existing partners. Demonstrate your solution live in the ISV sessions – seeing is believing!**

### Sponsorship package includes:

- 30 min ISV session
- Booth – includes branded back wall, roll up, high table, 2x stool, TV
- Attendee passes – 3 included
- Promotion on conference website and community portal
- Promotion in conference mailing
- Promotion in conference app
- Thank you sponsors with logo during keynote (identifying all sponsors, grouped per level)
- 1 min. video with sound played before each keynote
- Purchase additional attendee passes at Super Early Bird price

*Silver*

15.000 EUR



# Bronze sponsor

directions copenhagen  
for enterprise 2026

**11 Bronze sponsorship packages available**

**Connect face-to-face with new and potential partners.  
Establish your presence in the community.**

## **Sponsorship package includes:**

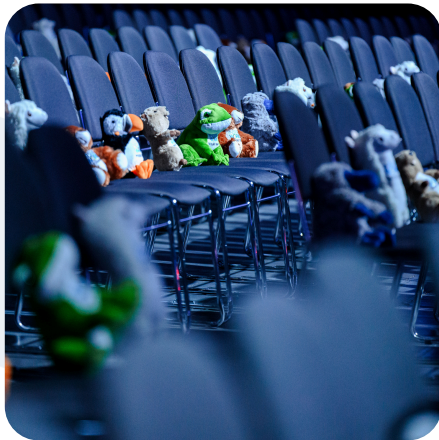
- Booth - includes branded back wall, high table, 2x stool, TV
- Attendee passes - 2 included
- Promotion on conference website and community portal
- Promotion in conference mailing
- Promotion in conference app
- Thank you sponsors with logo during keynote (identifying all sponsors, grouped per level)
- Purchase additional attendee passes at Super Early Bird price

*Bronze* 7.500 EUR



# Add-on *options*

Add these options to your sponsor package for more visibility or to enhance your conference experience.  
Only available for Gold, Silver and Bronze sponsors.



## Seat drop

500 EUR

One per keynote. Production and delivery of the items are the responsibility of the sponsor. The DfP team will distribute items on the seats. No printed materials please.



## Lanyards

1.750 EUR

Only two available! Distributed to 50% of the audience. Co-Branded with your logo and Directions for Partners logo.



## Tote bag

2.500 EUR

Branded tote bags are a stylish statement piece that resonate with your audience. Reusable tote bags are provided at the ISV Kiosk so attendees can carry your brand far and wide.

# Contact

directions copenhagen  
for enterprise 2026

Directions for Enterprise 2026 sponsorship opportunities are based on availability, first-come, first-served, and may be sold out without notice.

Sponsor packages and additional attendee passes can be purchased online. You can also check up-to-date availability.

[Get in touch](#)

[Check online availability](#)



# *See you in* **Copenhagen**

**directions** copenhagen  
**for enterprise** 2026